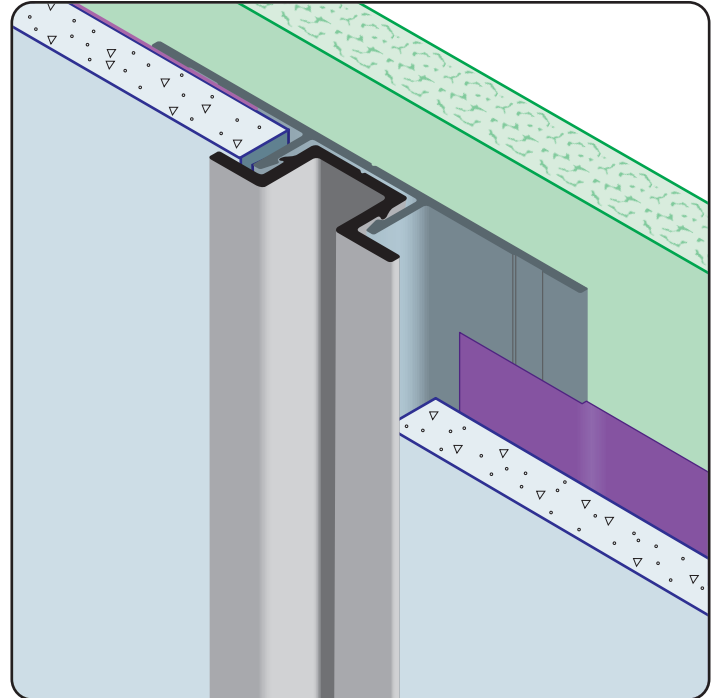


# VI-FCP: Vertical Insert for Fiber Cement Panel

- Available in Aluminum Alloy (6063 T-5)
- The VI-FCP Vertical Insert creates an attractive 1/2" architectural reveal when used in conjunction with the VR-FCP Vertical Retainer (sold separately).
- Note:** Attach panel per manufacturer's recommended installation instructions.
- Note:** Not to be used in horizontal applications.



## Most Common Sizes

**Length:** 10'

### Materials And Finishes:

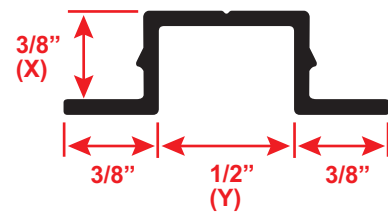
Details: [stpro.us/EXT](http://stpro.us/EXT)  
Aluminum Alloy (6063 T-5)

### ASTM Codes:

Details: [stpro.us/ASTM](http://stpro.us/ASTM)  
AA-M32-C10A21, AAMA 605.2, C841, C1047, C1063, B136-84, B244-97, D4214-98, ND1730-67-TYPE B

### Most Common Part Numbers:

- VI FCP375 50EK** VI-FCP: X=3/8, Y=1/2, Fluorophore Paint, AL, 10'
- VI FCP375 50EC** VI-FCP: X=3/8, Y=1/2, Clear Anodize, A, 10'
- VI FCP375 750ES** VI-FCP: X=3/8, Y=1/2, Stripped Finish, A, 10'



<b>QUOTE</b>	Company: _____	QTY: _____	PO Number: _____
	Name: _____	Material: Aluminum Alloy (6063 T-5)	Job/Project: _____
	Address: _____	Length: _____	Notes: _____
	City: _____		_____
	State/ZIP: _____		_____
	Phone: _____		_____
	eMail: _____		_____

**877-786-2587 • StocktonProducts.com**

