



CUSTOM SIZES AVAILABLE!

Stockton Custom Fabrication

877-786-2587

custom@StocktonProducts.com



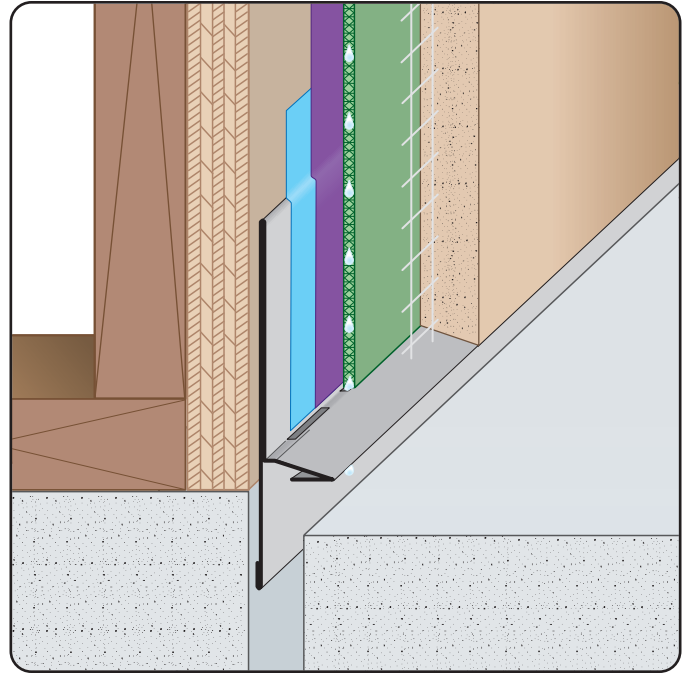
PRODUCTS™

TWXLF: Tru-Weep™ XL Foundation Screed

- Custom Sizes Available, Contact Customer Service For Details
- *Water Tested per ASTM E1105*
- Available in Aluminum (A), Copper (C), Galvanized Steel (GS), Bonderized (BN), Stainless Steel (SS) or Zinc (Z)

Stucco installation guidelines require stucco to be held up off the hardscape 2". The TWXLF provides weep slots in line with the drainage mat to maximize the drainage and ventilation per 2021 IBC: 2510.6.1

The extended back flashing leg will protect balcony waterproofing membranes.



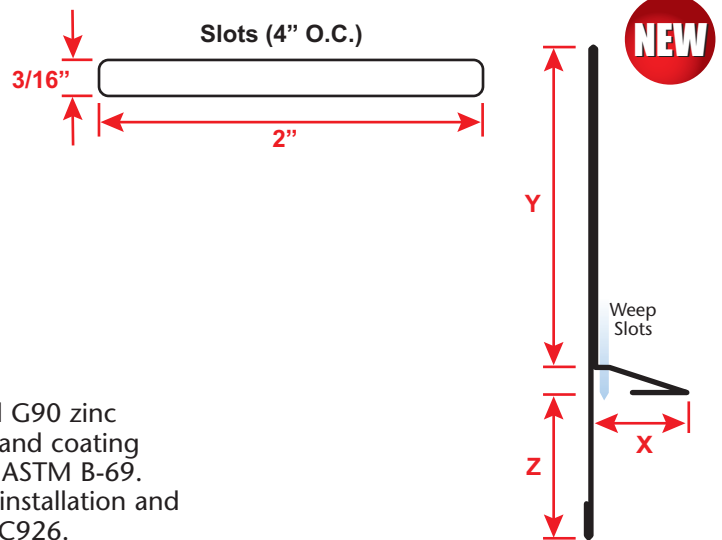
Most Common Sizes

X Sizes: 1/2", 5/8", 3/4", 7/8", 1", 1 1/4" or 1 3/8"

Y Sizes: 3 1/2", 4", 4 1/2" or 5"

Z Sizes: 2 1/2", 3", 3 1/2" or 4"

Length: 120"



Materials And Finishes:

Details: stpro.us/MET

Aluminum (A), Copper (C), Galvanized Steel (GS), Bonderized (BN), Stainless Steel (SS) or Zinc (Z)

ASTM Codes:

Details: stpro.us/ASTM

All Accessories are fabricated from prime galvanized steel G90 zinc coating by the hot dipped method, conforming to steel and coating specification ASTM A-653/A-653M or zinc alloy meeting ASTM B-69. Stainless Steel A480/A480M A580M (Stainless Steel) For installation and placement instructions refer to ASTM C1063, C841 and C926.

QUOTE	Company: _____	QTY: _____	PO Number: _____
	Name: _____	Material/Gauge: _____	Job/Project: _____
	Address: _____	X Size: _____	Notes: _____
	City: _____	Y Size: _____	_____
	State/ZIP: _____	Z Size: _____	_____
	Phone: _____	Length: _____	_____
	eMail: _____		_____

877-786-2587 • StocktonProducts.com

