



CUSTOM SIZES AVAILABLE!

Stockton Custom Fabrication

877-786-2587

custom@StocktonProducts.com



PRODUCTS™

TSF: Transition Step Flashing

- Custom Sizes Available, Contact Customer Service For Details
- Available Curved Upon Request
- Available in Aluminum (A), Copper (C), Galvanized Steel (GS), Bonderized (BN), Galvalume® (GVM), Stainless Steel (SS) or Zinc (Z)

A step flashing that provides a drip edge for top of windows and door conditions or where special flashing conditions are present.

Most Common Sizes

X Sizes: 1/2", 3/4", 7/8", 1" or 1 3/8"

Y Sizes: 3 1/2", 4" or 5"

Z Sizes: 1/2", 3/4", 1" or 2"

Length: 120"

Materials And Finishes:

Details: stpro.us/MET

Aluminum (A), Copper (C), Galvanized Steel (GS), Bonderized (BN), Galvalume® (GVM), Stainless Steel (SS) or Zinc (Z)

ASTM Codes:

Details: stpro.us/ASTM

All Accessories are fabricated from prime galvanized steel G90 zinc coating by the hot dipped method, conforming to steel and coating specification ASTM A-653/A-653M or zinc alloy meeting ASTM B-69. Stainless Steel A480/A480M A580M (Stainless Steel) For installation and placement instructions refer to ASTM C1063, C841 and C926.

Most Common Part Numbers:

TSF034 312 012 TSF: X=3/4, Y=3 1/2, Z=1/2, GS, 10'

TSF078 312 034 TSF: X=7/8, Y=3 1/2, Z=3/4, GS, 10'

TSF078 500 012 TSF: X=7/8, Y=5, Z=1/2, GS, 10'

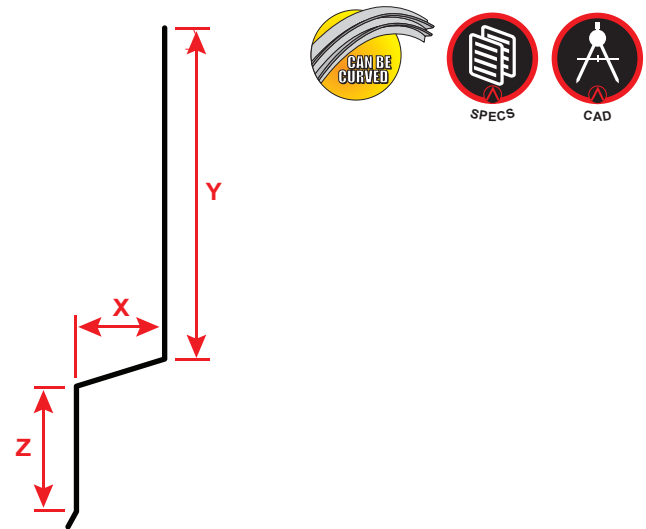
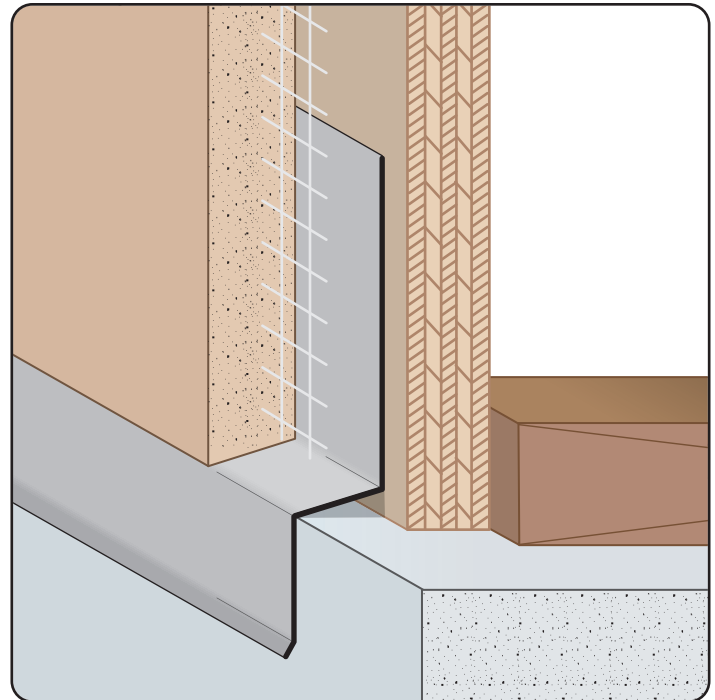
TSF078 500 100 TSF: X=7/8, Y=5, Z=1, GS, 10'

TSF078 500 200 TSF: X=7/8, Y=5, Z=2, GS, 10'

TSF114 112 012 TSF: X=1 1/4, Y=1 1/2, Z=1/2, GS, 10'

TSF214 400 100 TSF: X=2 1/4, Y=4, Z=1, GS, 10'

TSF214 500 100 TSF: X=2 1/4, Y=5, Z=1, GS, 10'



QUOTE	Company: _____	QTY: _____	PO Number: _____
	Name: _____	Material/Gauge: _____	Job/Project: _____
	Address: _____	X Size: _____	Notes: _____
	City: _____	Y Size: _____	_____
	State/ZIP: _____	Z Size: _____	_____
	Phone: _____	Length: _____	_____
	eMail: _____		_____

877-786-2587 • StocktonProducts.com

