



CUSTOM SIZES AVAILABLE!

Stockton Custom Fabrication

877-786-2587

custom@StocktonProducts.com



PRODUCTS™

TRM: T-Reveal Mold

- Custom Sizes Available, Contact Customer Service For Details
- SolidGround® Design For Moisture Protection
- Available in Aluminum (A), Copper (C), Galvanized Steel (GS), Bonderized (BN), Galvalume® (GVM), Stainless Steel (SS) or Zinc (Z)

One-piece SolidGround® design feature mitigates the concern of moisture penetration in a horizontal condition. Provides a reveal and plaster stop at parapet top and function as a depth screed. Can be used at ceiling to wall conditions when dealing with dissimilar materials.

Most Common Sizes

X Sizes: 3/4", 7/8", 1 1/4" or 1 3/8"

Y Sizes: 1", 1 1/2" or 2"

Z Sizes: 1", 1 1/2", 2" or 2 1/2"

Length: 120"

Materials And Finishes:

Details: stpro.us/MET

Aluminum (A), Copper (C), Galvanized Steel (GS), Bonderized (BN), Galvalume® (GVM), Stainless Steel (SS) or Zinc (Z)

ASTM Codes:

Details: stpro.us/ASTM

All Accessories are fabricated from prime galvanized steel G90 zinc coating by the hot dipped method, conforming to steel and coating specification ASTM A-653/A-653M or zinc alloy meeting ASTM B-69. Stainless Steel A480/A480M A580M (Stainless Steel) For installation and placement instructions refer to ASTM C1063, C841 and C926.

Most Common Part Numbers:

TRM034 012 112 TRM: X=3/4, Y=1/2, Z=1 1/2, GS, 10'

TRM034 112 100 TRM: X=3/4, Y=1 1/2, Z=1, GS, 10'

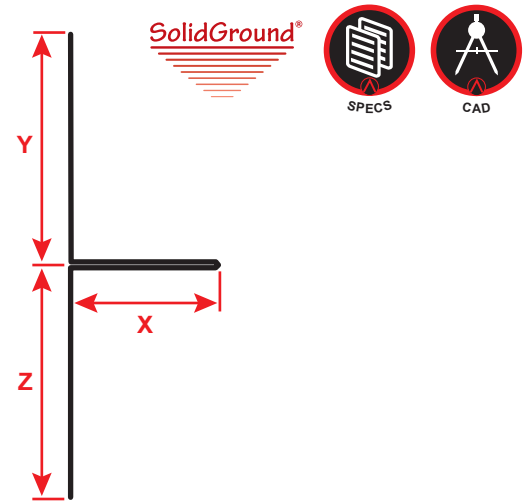
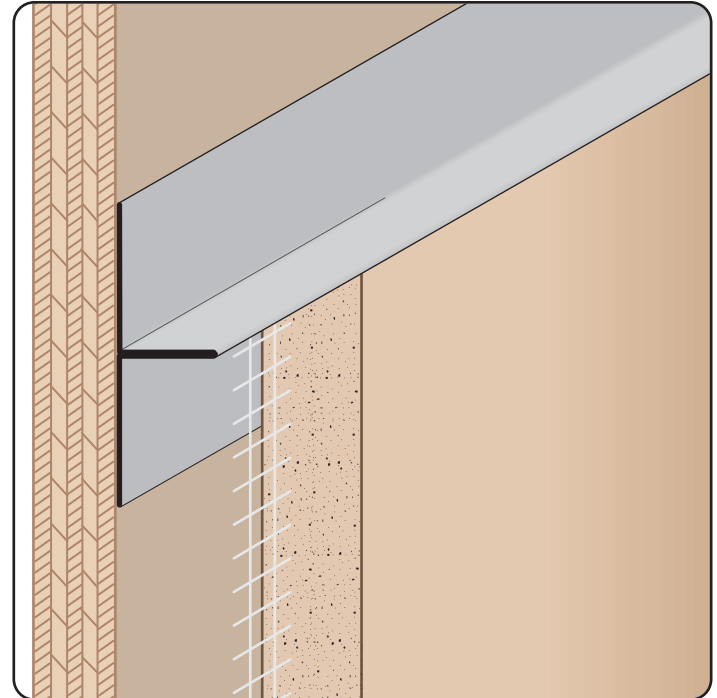
TRM078 112 100 TRM: X=7/8, Y=1 1/2, Z=1, GS, 10'

TRM114 200 212A TRM: X=1 1/4, Y=2, Z=2 1/2, A, 10'

TRM138 112 112 TRM: X=1 3/8, Y=1 1/2, Z=1 1/2, GS, 10'

TRM138 200 200SS TRM: X=1 3/8, Y=2, Z=2, SS, 10'

TRM75 50EC TRM: X=3/4, Y=1/2, Z=1, Clear Anod, 10'



QUOTE	Company: _____	QTY: _____	PO Number: _____
	Name: _____	Material/Gauge: _____	Job/Project: _____
	Address: _____	X Size: _____	Notes: _____
	City: _____	Y Size: _____	_____
	State/ZIP: _____	Z Size: _____	_____
	Phone: _____	Length: _____	_____
	eMail: _____		_____

877-786-2587 • StocktonProducts.com

