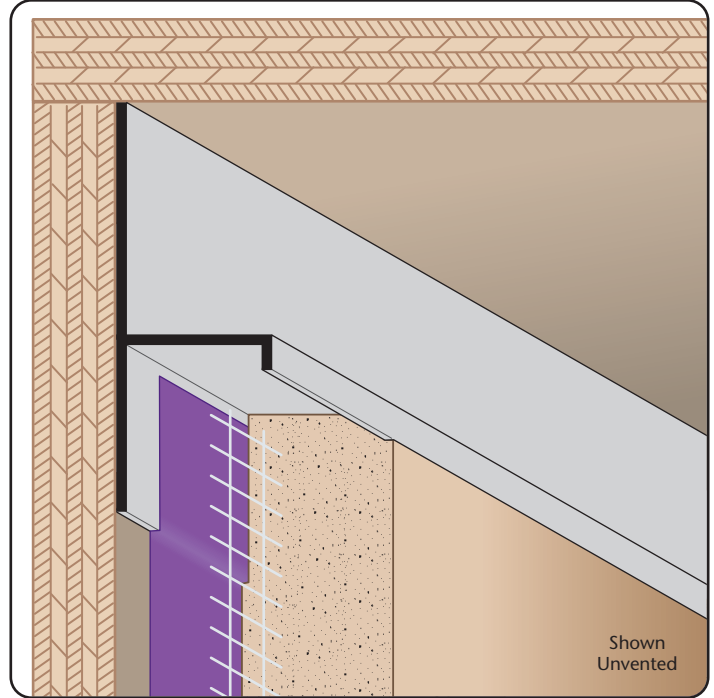


TRM: T Reveal Molding

- Available With 1/8" x 1" Vent Slots or No Vents
- Available Curved Upon Request
- Available in Aluminum Alloy (6063 T-5)

Provides a reveal and acts as a plaster stop/control screed for conventional 3-coat stucco at wall base and column base conditions where a reveal and plaster stop are required. Can be used to create a reveal at ceiling/wall conditions.



Most Common Sizes
Y Sizes: 3/4", 1", 1 1/2", 2", 2 1/2", 3" or 4"
Length: 10'

Materials And Finishes:

Details: stpro.us/EXT

Aluminum Alloy (6063 T-5)

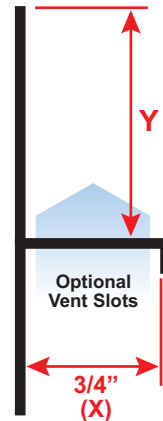
ASTM Codes:

Details: stpro.us/ASTM

AA-M32-C10A21, AAMA 605.2, C841, C1047, C1063, B136-84, B244-97, D4214-98, ND1730-67-TYPE B

Most Common Part Numbers:

TRM75 112	TRM: X=3/4, Y=1 1/2, A, 10'
TRM75 150EC	TRM: X=3/4, Y=1 1/2, Clear Anod, A, 10'
TRM75 150EC	TRM: X=3/4, Y=1 1/2, Clear Anod, A, 10'
TRM75 200EC	TRM: X=3/4, Y=2, Clear Anodize, A, 10'
TRM75 200EMB	TRM: X=3/4, Y=2, Medium Bronze Anodize, AL, 10'
TRM75 300EC	TRM: X=3/4, Y=3, Clear Anodize, A, 10'
TRM75 400ES	TRM: X=3/4, Y=4, Stripped Finish, A, 10'



QUOTE	Company: _____	QTY: _____	PO Number: _____
	Name: _____	Material: Aluminum Alloy (6063 T-5)	Job/Project: _____
	Address: _____	Y Size: _____	Notes: _____
	City: _____	Length: _____	_____
	State/ZIP: _____	Vent Slots: <input type="checkbox"/> None <input type="checkbox"/> 1/8" x 1"	_____
	Phone: _____		_____
	eMail: _____		_____

877-786-2587 • StocktonProducts.com

