



CUSTOM SIZES AVAILABLE!

Stockton Custom Fabrication
877-786-2587
custom@StocktonProducts.com



PRODUCTS™

SSM: Step Separation Mold

- Custom Sizes Available, Contact Customer Service For Details
- Available With 1/8", 1/4" Vent Holes or No Holes
- Available in Aluminum (A), Copper (C), Galvanized Steel (GS), Bonderized (BN), Galvalume® (GVM), Stainless Steel (SS) or Zinc (Z)

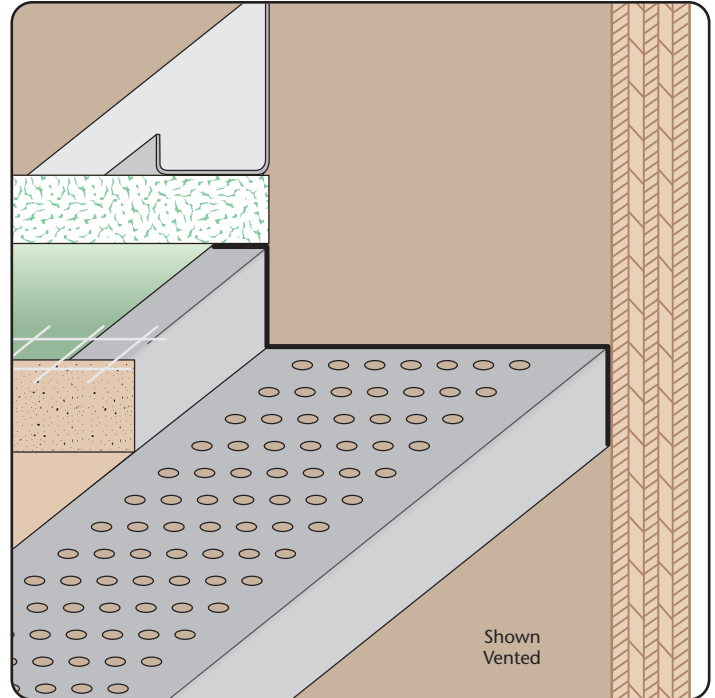
A versatile molding used primarily to separate either plaster or drywall from other materials.

Most Common Sizes

X Sizes: 1/2", 5/8", 3/4", 7/8" or 1"

Y Sizes: 3/4", 1", 1 1/2", 2", 3", 3 1/2", 4" or 4 1/2"

Length: 120"



Materials And Finishes:

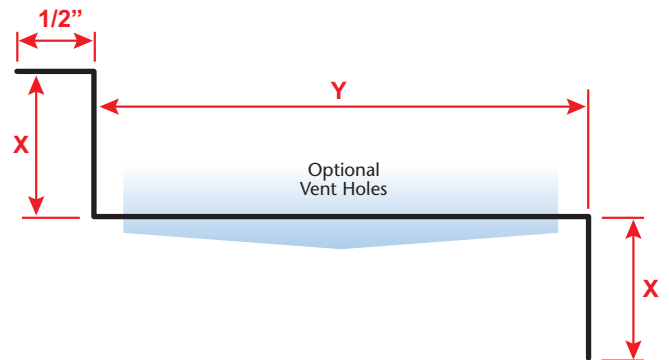
Details: stpro.us/MET

Aluminum (A), Copper (C), Galvanized Steel (GS), Bonderized (BN), Galvalume® (GVM), Stainless Steel (SS) or Zinc (Z)

ASTM Codes:

Details: stpro.us/ASTM

653-CS, A1018, A262, A36, A513, A653, A792, A924, B 370-12, B-209, B-209, B6/B69, C1047, C1063, C841, ML/SFA 920



Most Common Part Numbers:

SSM034V200 SSM: X=3/4, 1/8 Vent, Y=2, GS, 10'

SSM058V212J SSM: X=5/8, 1/4 Vent, Y=2 1/2, GS, 10'

QUOTE	Company: _____	QTY: _____	PO Number: _____
	Name: _____	Material/Gauge: _____	Job/Project: _____
	Address: _____	X Size: _____	Notes: _____
	City: _____	Y Size: _____	_____
	State/ZIP: _____	Length: _____	_____
	Phone: _____	Weep Holes: <input type="checkbox"/> None <input type="checkbox"/> 1/8" <input type="checkbox"/> 1/4"	_____
	eMail: _____		_____

877-786-2587 • StocktonProducts.com

