



CUSTOM SIZES AVAILABLE!

Stockton Custom Fabrication

877-786-2587

custom@StocktonProducts.com



SDE: #12 Soffit Drip Edge®

- Custom Sizes Available, Contact Customer Service For Details
- *Water Tested per ASTM E1105*
- SUPERIOR® Moisture Protection
- No Weep Holes
- Available Curved Upon Request
- Available in Aluminum (A), Copper (C), Galvanized Steel (GS), Bonderized (BN), Galvalume® (GVM), Stainless Steel (SS) or Zinc (Z)

The #12 drip molding is designed to be used as a drip molding at the fascia/soffit transition as well as at recessed window conditions to provide a decorative drip edge and plaster stop.

Note: Factory curving is available, but limited, so please contact customer service for more information.

Most Common Sizes

X Sizes: 5/8", 3/4" or 7/8"

Y Sizes: 2 1/2", 3 1/2" or 4"

Length: 120"

Materials And Finishes:

Details: stpro.us/MET

Aluminum (A), Copper (C), Galvanized Steel (GS), Bonderized (BN), Galvalume® (GVM), Stainless Steel (SS) or Zinc (Z)

ASTM Codes:

Details: stpro.us/ASTM

All Accessories are fabricated from prime galvanized steel G90 zinc coating by the hot dipped method, conforming to steel and coating specification ASTM A-653/A-653M or zinc alloy meeting ASTM B-69. Stainless Steel A480/A480M A580M (Stainless Steel) For installation and placement instructions refer to ASTM C1063, C841 and C926.

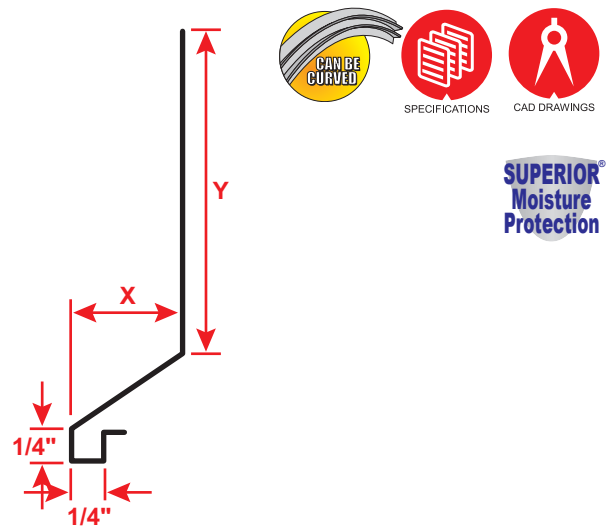
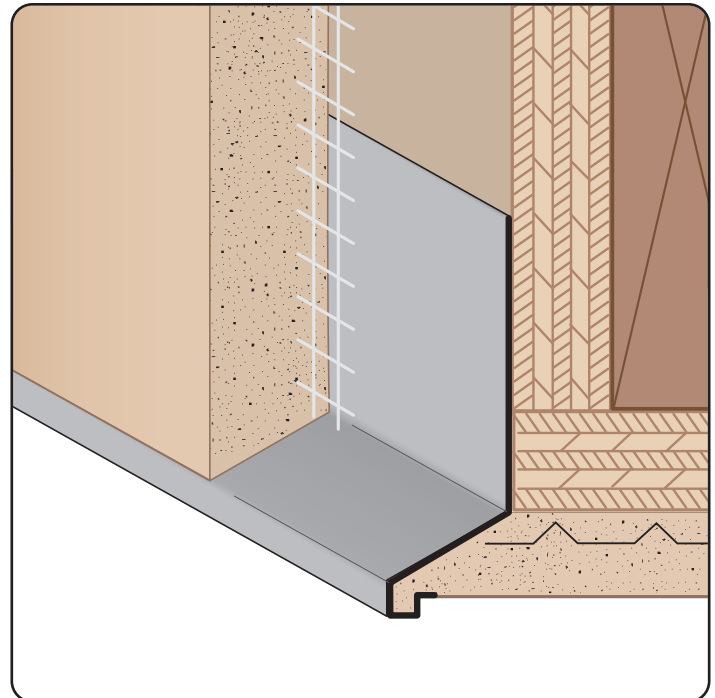
Most Common Part Numbers:

SDE078 312 SDE: X=7/8, Y=3 1/2, GS, 10'

SDE078 312SS SDE: X=7/8, Y=3 1/2, SS, 10'

SDE078 400 SDE: X=7/8, Y=4, GS, 10'

SDE078 400SS SDE: X=7/8, Y=4, SS, 10'



QUOTE	Company: _____	QTY: _____	PO Number: _____
	Name: _____	Material/Gauge: _____	Job/Project: _____
	Address: _____	X Size: _____	Notes: _____
	City: _____	Y Size: _____	_____
	State/ZIP: _____	Length: _____	_____
	Phone: _____		_____
	eMail: _____		_____

877-786-2587 • StocktonProducts.com

