



CUSTOM SIZES AVAILABLE!

Stockton Custom Fabrication

877-786-2587

custom@StocktonProducts.com



PRODUCTS™

SBW: Santa Barbara Weep Screed™

- Custom Sizes Available, Contact Customer Service For Details
- Available With or Without 1/4" Weep Holes
- Available in Aluminum (A), Copper (C), Galvanized Steel (GS), Bonderized (BN), Galvalume® (GVM), Stainless Steel (SS) or Zinc (Z)

A unique one piece weep screed design that combines the features of a traditional foundation weep screed while providing an aesthetically pleasing look. The upper leg has a plaster stop with a 1/4" closed hem for safety and weep holes.

Most Common Sizes

X Sizes: 3/4", 7/8", 1" or 1 3/8"

Y Sizes: 3 3/4"

Z Sizes: 1/4"

Length: 120"

Materials And Finishes:

Details: stpro.us/MET

Aluminum (A), Copper (C), Galvanized Steel (GS), Bonderized (BN), Galvalume® (GVM), Stainless Steel (SS) or Zinc (Z)

ASTM Codes:

Details: stpro.us/ASTM

All Accessories are fabricated from prime galvanized steel G90 zinc coating by the hot dipped method, conforming to steel and coating specification ASTM A-653/A-653M or zinc alloy meeting ASTM B-69. Stainless Steel A480/A480M A580M (Stainless Steel) For installation and placement instructions refer to ASTM C1063, C841 and C926.

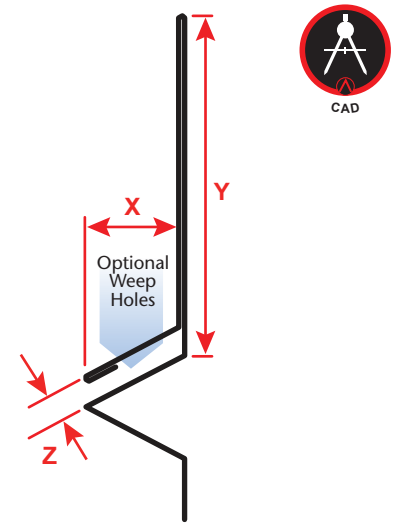
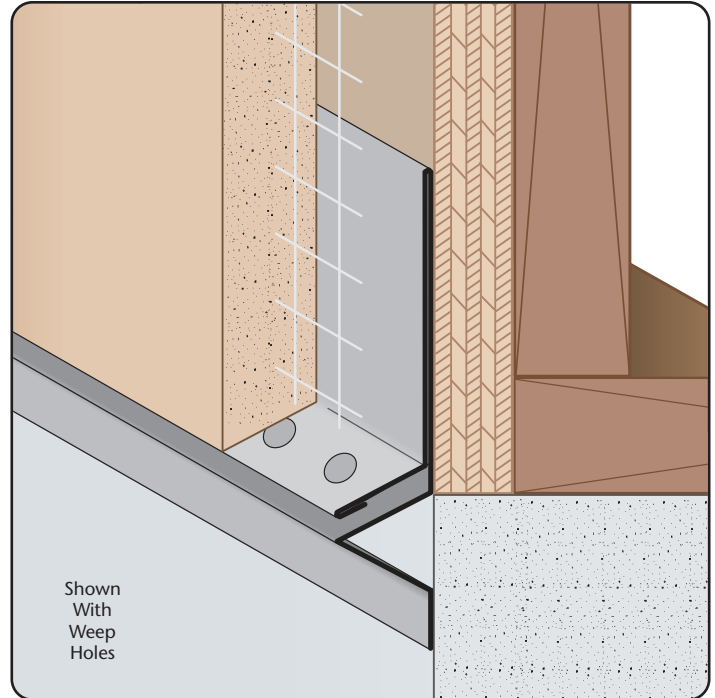
Most Common Part Numbers:

SBW078W300 014L SBW: X=7/8, 1/2 Weep, Y=3, Z=1/4, GS, 10'

SBW078W300 014LSS SBW: X=7/8, 1/2 Weep, Y=3, Z=1/4, GS, 10', SS, 10'

SBW078W314 014J SBW: X=7/8, 1/4Weep, Y=3 1/4, Z=1/4, GS, 10', GS, 10'

SBW138W314 014JZ SBW: X=1 3/8, 1/4 Weep, Y=3 1/4, Z=1/4, GS, 10', Z, 10'



QUOTE	Company: _____	QTY: _____	PO Number: _____
	Name: _____	Material/Gauge: _____	Job/Project: _____
	Address: _____	X Size: _____	Notes: _____
	City: _____	Y Size: _____	_____
	State/ZIP: _____	Z Size: _____	_____
	Phone: _____	Weep Holes: <input type="checkbox"/> None <input type="checkbox"/> 1/4"	_____
	eMail: _____		_____

877-786-2587 • StocktonProducts.com

