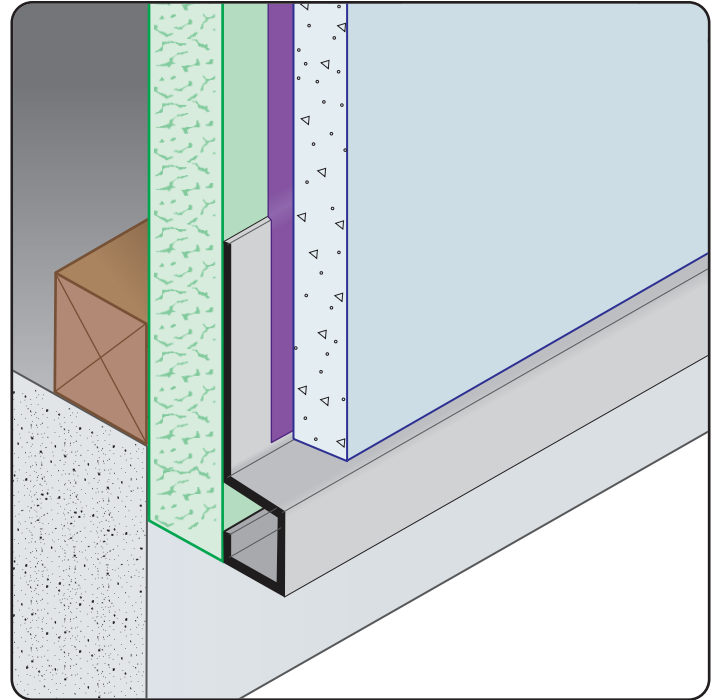


SB-FCP: Starter Base for Fiber Cement Panel

- Available in Aluminum Alloy (6063 T-5)
- A functional starter trim piece for the fiber cement panel that also provides a weep point for moisture.
- Note:** Attach panel per manufacturer's recommended installation instructions.



Most Common Sizes

Length: 10'

Materials And Finishes:

Details: stpro.us/EXT

Aluminum Alloy (6063 T-5)

ASTM Codes:

Details: stpro.us/ASTM

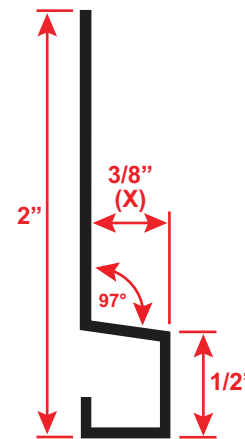
AA-M32-C10A21, AAMA 605.2, C841, C1047, C1063, B136-84, B244-97, D4214-98, ND1730-67-TYPE B

Most Common Part Numbers:

SB FCP EC SB-FCP: X=3/8, Clear Anodize, A, 10'

SB FCP ECH SB-FCP: X=3/8, Chem-Film, A, 10'

SB FCP EP SB-FCP: X=3/8, Powder Coated, A, 10'



QUOTE	Company: _____	QTY: _____	PO Number: _____
	Name: _____	Material: Aluminum Alloy (6063 T-5)	Job/Project: _____
	Address: _____	Length: _____	Notes: _____
	City: _____		_____
	State/ZIP: _____		_____
	Phone: _____		_____
	eMail: _____		_____

877-786-2587 • StocktonProducts.com

