



**CUSTOM SIZES AVAILABLE!**

Stockton Custom Fabrication

877-786-2587

custom@StocktonProducts.com



# OPC: Offset Plaster Channel Screed

- Custom Sizes Available, Contact Customer Service For Details
- Available With 1/8", 1/4" Vent Holes or No Holes
- Available With 1/8" Weep Holes or No Holes
- Available Curved Upon Request
- Available in Aluminum (A), Copper (C), Galvanized Steel (GS), Bonderized (BN), Galvalume® (GVM), Stainless Steel (SS) or Zinc (Z)

A channel screed style reveal molding with return keys for screeding. Provides a longer leg on one side for dissimilar depths of materials, such as EIFS.

### Most Common Sizes

**X Sizes:** 3/8", 1/2", 5/8", 3/4", 7/8" or 1"

**Y Sizes:** 3/4", 1", 1 1/2", 2", 2 1/2" or 3"

**Z Sizes:** 1/2", 3/4", 7/8", 1", 1 1/4", 1 1/2", 1 3/4" or 2"

**Length:** 120"

### Materials And Finishes:

Details: [stpro.us/MET](http://stpro.us/MET)

Aluminum (A), Copper (C), Galvanized Steel (GS), Bonderized (BN), Galvalume® (GVM), Stainless Steel (SS) or Zinc (Z)

### ASTM Codes:

Details: [stpro.us/ASTM](http://stpro.us/ASTM)

All Accessories are fabricated from prime galvanized steel G90 zinc coating by the hot dipped method, conforming to steel and coating specification ASTM A-653/A-653M or zinc alloy meeting ASTM B-69. Stainless Steel A480/A480M A580M (Stainless Steel) For installation and placement instructions refer to ASTM C1063, C841 and C926.

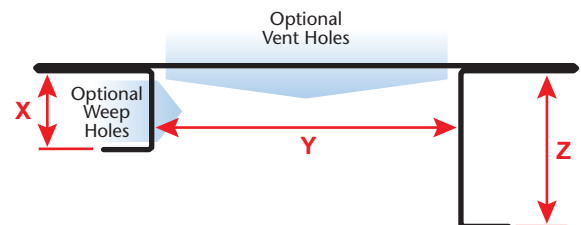
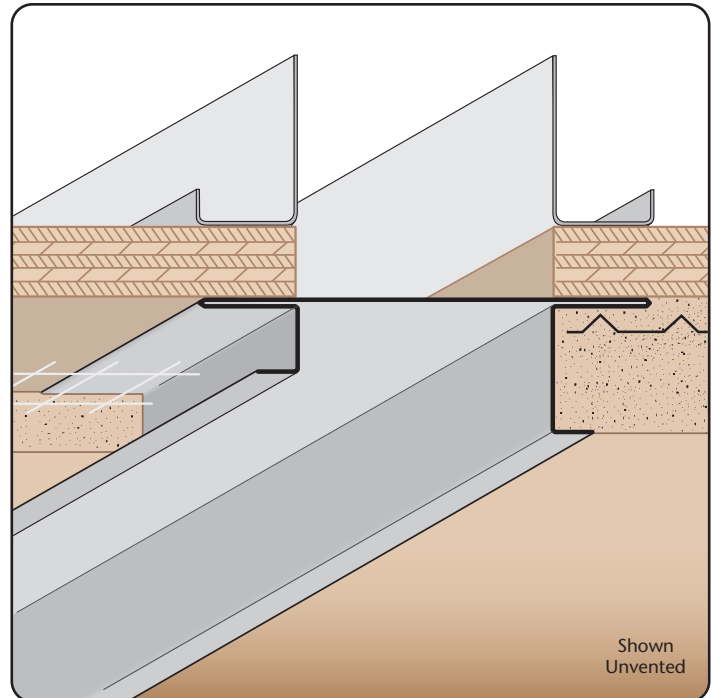
### Most Common Part Numbers:

**OPC012 100 034A** OPC: X=1/2, Y=1, Z=3/4, A, 10'

**OPC038 100 078** OPC: X=3/8, Y=1, Z=7/8, GS, 10'

**OPC058 012 078A** OPC: X=5/8, Y=1/2, Z=7/8, A, 10'

**OPC078 034 134A** OPC: X=7/8, Y=3/4, Z=1 3/4, A, 10'



<b>QUOTE</b>	Company: _____	Material/Gauge: _____	QTY: _____
	Name: _____	X Size: _____	PO Number: _____
	Address: _____	Y Size: _____	Job/Project: _____
	City: _____	Z Size: _____	Notes: _____
	State/ZIP: _____	Length: _____	_____
	Phone: _____	Vent Holes: <input type="checkbox"/> None <input type="checkbox"/> 1/8" <input type="checkbox"/> 1/4"	_____
	eMail: _____	Weep Holes: <input type="checkbox"/> None <input type="checkbox"/> 1/8"	_____

**877-786-2587 • StocktonProducts.com**

