



CUSTOM SIZES AVAILABLE!

Stockton Custom Fabrication

877-786-2587

custom@StocktonProducts.com



PRODUCTS®

MSX: M-Slide Expansion Joint® - 2 Piece

- Custom Sizes Available, Contact Customer Service For Details
- SUPERIOR® Moisture Protection
- SolidGround® Design For Moisture Protection
- Available With Weep Holes, Weep Slots or No Weep
- Available in Aluminum (A), Copper (C), Galvanized Steel (GS), Bonderized (BN), Galvalume® (GVM), Stainless Steel (SS) or Zinc (Z)

The dual function self-aligning expansion joint provides movement capability at floor line while allowing moisture to release from the top ground and lock out moisture from the bottom. Special "Step" on the attachment leg provides a locator for correct placement of the fasteners and helps keep the molding laying flat on the wall. Provides 1" of vertical movement.

US Patent 7,673,421 B2

Most Common Part Numbers:

X Sizes: 5/8", 3/4", 7/8", 1 3/8" or 1 1/2"

Y Sizes: 2 1/2", 3" or 3 1/2"

Z Sizes: 2 1/2", 3" or 3 1/2"

Length: 120"

Materials And Finishes:

Details: stpro.us/MET

Aluminum (A), Copper (C), Galvanized Steel (GS), Bonderized (BN), Galvalume® (GVM), Stainless Steel (SS) or Zinc (Z)

ASTM Codes:

Details: stpro.us/ASTM

All Accessories are fabricated from prime galvanized steel G90 zinc coating by the hot dipped method, conforming to steel and coating specification ASTM A-653/A-653M or zinc alloy meeting ASTM B-69. Stainless Steel A480/A480M A580M (Stainless Steel) For installation and placement instructions refer to ASTM C1063, C841 and C926.

Packaging:

10/CT 200/PL

Most Common Part Numbers:

MSX034 300 300 MSX: X=3/4, Y=3, Z=3, GS, 10'

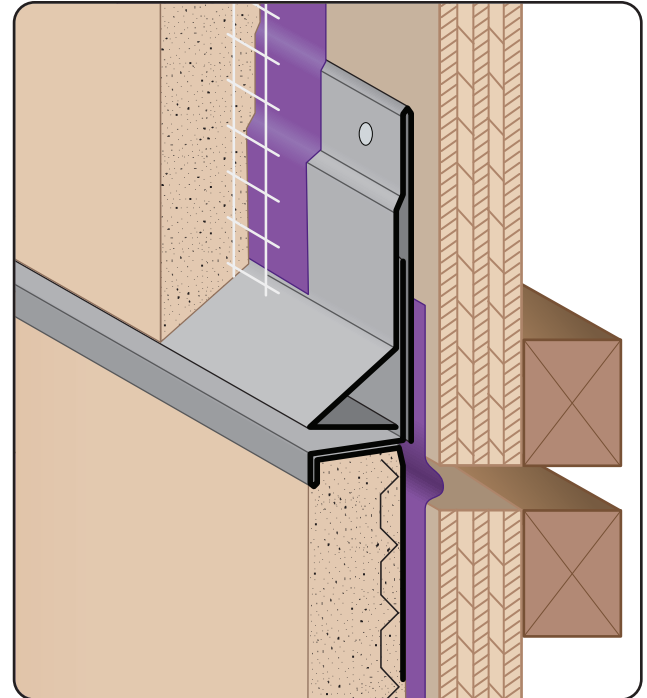
MSX078 212 212 MSX: X=7/8, Y=2 1/2, Z=2 1/2, GS, 10'

MSX078 300 300 MSX: X=7/8, Y=3, Z= 3, GS, 10'

MSX078 312 312 MSX: X=7/8, Y=3 1/2, Z=3 1/2, GS, 10'

MSX078W312 312J MSX: X=7/8, 1/4 Wp, Y=3 1/2, Z=3 1/2, GS, 10'

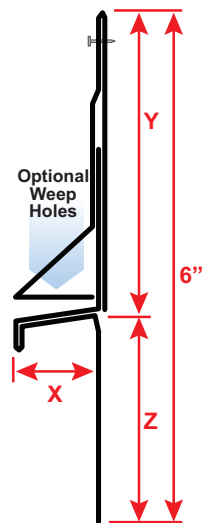
MSX118 312 312 MSX: X=1 1/8, Y=3 1/2, Z= 3 1/2, GS, 10'



SUPERIOR
Moisture
Protection



SOLID
GROUND



QUOTE	Company: _____	QTY: _____	Length: _____
	Name: _____	Material/Gauge: _____	PO Number: _____
	Address: _____	X Size: _____	Job/Project: _____
	City: _____	Y Size: _____	Notes: _____
	State/ZIP: _____	Z Size: _____	_____
	Phone: _____	Weep Holes: <input type="checkbox"/> None <input type="checkbox"/> 1/4" <input type="checkbox"/> 1/2"	_____
	eMail: _____	Weep Slots: <input type="checkbox"/> None <input type="checkbox"/> 3/16 x 2"	_____

877-786-2587 • StocktonProducts.com

