



**CUSTOM SIZES AVAILABLE!**

Stockton Custom Fabrication

877-786-2587

custom@StocktonProducts.com



# MSC: M-Slide Expansion Joint® - 2 Piece

- Custom Sizes Available, Contact Customer Service For Details
- Does Not Have A Plaster Return Key
- SUPERIOR® Moisture Protection
- Available With Weep Holes, Weep Slots or No Weep
- Available in Aluminum (A), Copper (C), Galvanized Steel (GS), Bonderized (BN), Galvalume® (GVM), Stainless Steel (SS) or Zinc (Z)

The self-aligning, dual function M-Slide Expansion Joint® provides movement capability at the floor line while providing a water management system that will allow moisture to release from the top ground and lock out moisture from the bottom ground. Provides 1" of vertical movement.

US Patent 7,673,421 B2

## Most Common Part Numbers:

**X Sizes:** 5/8", 3/4", 7/8", 1", 1 3/8" or 1 1/2"

**Y Sizes:** 2 1/2" or 3"

**Z Sizes:** 2 1/2", 3" or 3 1/2"

**Length:** 120"

## Materials And Finishes:

Details: [stpro.us/MET](http://stpro.us/MET)

Aluminum (A), Copper (C), Galvanized Steel (GS), Bonderized (BN), Galvalume® (GVM), Stainless Steel (SS) or Zinc (Z)

## ASTM Codes:

Details: [stpro.us/ASTM](http://stpro.us/ASTM)

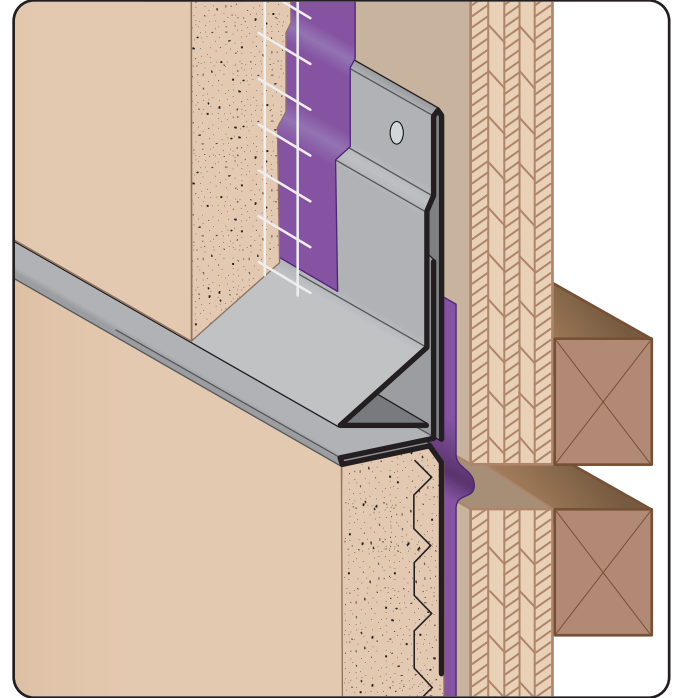
All Accessories are fabricated from prime galvanized steel G90 zinc coating by the hot dipped method, conforming to steel and coating specification ASTM A-653/A-653M or zinc alloy meeting ASTM B-69. Stainless Steel A480/A480M A580M (Stainless Steel) For installation and placement instructions refer to ASTM C1063, C841 and C926.

## Packaging:

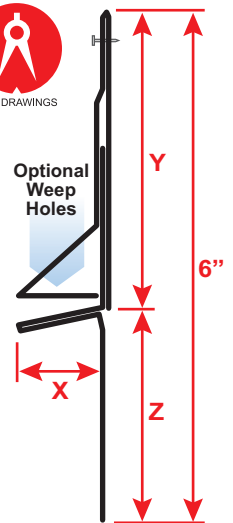
10/CT      200/PL

## Most Common Part Numbers:

<b>MSC034 212 312</b>	MSC: X=3/4, Y=2 1/2, Z=3 1/2, GS, 10'
<b>MSC034 312 212</b>	MSC: X=3/4, Y=3 1/2, Z=3 1/2, GS, 10'
<b>MSC078 300 300</b>	MSC: X=7/8, Y=3, Z=3, GS, 10'
<b>MSC078 300 300Z</b>	MSC: X=7/8, Y=3, Z=3, Z, 10'
<b>MSC078 312 212</b>	MSC: X=7/8, Y=3 1/2, Z=3 1/2, GS, 10'
<b>MSC078 312 312</b>	MSC: X=7/8, Y=3 1/2, Z=3 1/2, GS, 10'
<b>MSC100W300 300JSS4</b>	MSC: X=1, 1/4 Weep, Y=3, Z=3, SS, 4'



**SUPERIOR**  
Moisture  
Protection



<b>QUOTE</b>	Company: _____	QTY: _____	Length: _____
	Name: _____	Material/Gauge: _____	PO Number: _____
	Address: _____	X Size: _____	Job/Project: _____
	City: _____	Y Size: _____	Notes: _____
	State/ZIP: _____	Z Size: _____	_____
	Phone: _____	Weep Holes: <input type="checkbox"/> None <input type="checkbox"/> 1/4"	_____
	eMail: _____	Weep Slots: <input type="checkbox"/> None <input type="checkbox"/> 3/16 x 2"	_____

**877-786-2587 • StocktonProducts.com**

