



CUSTOM SIZES AVAILABLE!

Stockton Custom Fabrication

877-786-2587

custom@StocktonProducts.com



PRODUCTS™

JCB: J Caulking Bead

- Custom Sizes Available, Contact Customer Service For Details
- SUPERIOR® Moisture Protection
- Available Curved Upon Request
- Available in Aluminum (A), Copper (C), Galvanized Steel (GS), Bonderized (BN), Galvalume® (GVM), Stainless Steel (SS) or Zinc (Z)

Standard plaster stop/casing bead for terminating stucco with an extended return key for caulking.

Most Common Sizes

X Sizes: 3/8", 1/2", 7/8", 1 1/8", 1 1/4" or 1 3/8"

Y Sizes: 3 1/2" or 5"

Z Sizes: 1/2", 5/8", 3/4" or 1"

Length: 120"

Materials And Finishes:

Details: stpro.us/MET

Aluminum (A), Copper (C), Galvanized Steel (GS), Bonderized (BN), Galvalume® (GVM), Stainless Steel (SS) or Zinc (Z)

ASTM Codes:

Details: stpro.us/ASTM

All Accessories are fabricated from prime galvanized steel G90 zinc coating by the hot dipped method, conforming to steel and coating specification ASTM A-653/A-653M or zinc alloy meeting ASTM B-69. Stainless Steel A480/A480M A580M (Stainless Steel) For installation and placement instructions refer to ASTM C1063, C841 and C926.

Most Common Part Numbers:

JCB078 214 100 JCB: X=7/8, Y=2 1/4, Z=1, GS, 10'

JCB078 300 034Z JCB: X=7/8, Y=3, Z=3/4, Z, 10'

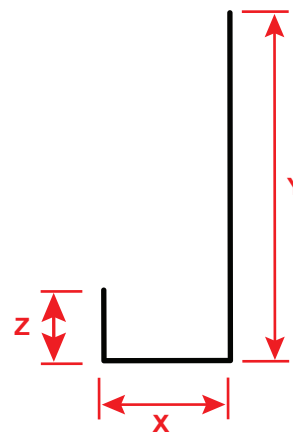
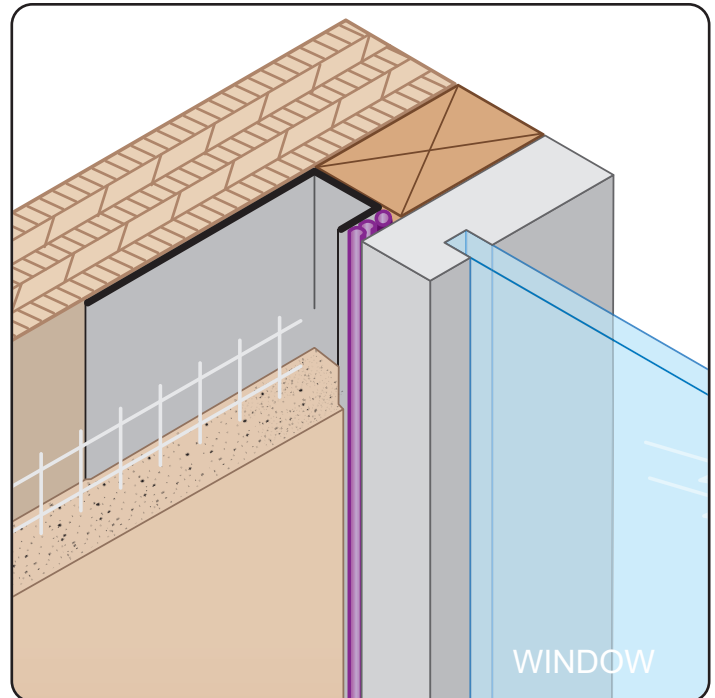
JCB078 300 100 JCB: X=7/8, Y=3, Z=1, GS, 10'

JCB078 312 012 JCB: X=7/8, Y=3 1/2, Z=1/2, GS, 10'

JCB118 200 034 JCB: X=1 1/8, Y=2, Z=3/4, GS, 10'

JCB118 400 038 JCB: X=1 1/8, Y=2, Z= 3/8, GS, 10'

JCB138 214 100 JCB: X=1 3/8, Y=2 1/4, Z=1, GS, 10'



QUOTE	Company: _____	QTY: _____	PO Number: _____
	Name: _____	Material/Gauge: _____	Job/Project: _____
	Address: _____	X Size: _____	Notes: _____
	City: _____	Y Size: _____	_____
	State/ZIP: _____	Z Size: _____	_____
	Phone: _____	Length: _____	_____
	eMail: _____		_____

877-786-2587 • StocktonProducts.com

