



**CUSTOM SIZES AVAILABLE!**

Stockton Custom Fabrication

877-786-2587

custom@StocktonProducts.com



**PRODUCTS™**

## J-B: J Bead

- Custom Sizes Available, Contact Customer Service For Details
- SUPERIOR® Moisture Protection
- Available With 1/8", 1/2" Weep Holes or No Weep
- Available Curved Upon Request
- Available in Aluminum (A), Copper (C), Galvanized Steel (GS), Bonderized (BN), Galvalume® (GVM), Stainless Steel (SS) or Zinc (Z)

Standard plaster stop/casing bead for terminating stucco. Has a return key for finishing.

### Most Common Sizes

**X Sizes:** 3/8", 1/2", 3/4", 7/8", 1", 1 1/8", 1 1/4", 1 3/8", 1 1/2" or 2"

**Y Sizes:** 3 1/2" or 5"

**Length:** 120"

### Materials And Finishes:

Details: [stpro.us/MET](http://stpro.us/MET)

Aluminum (A), Copper (C), Galvanized Steel (GS), Bonderized (BN), Galvalume® (GVM), Stainless Steel (SS) or Zinc (Z)

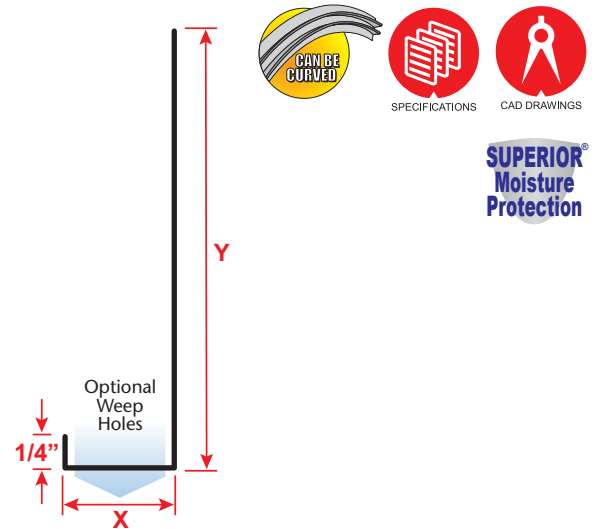
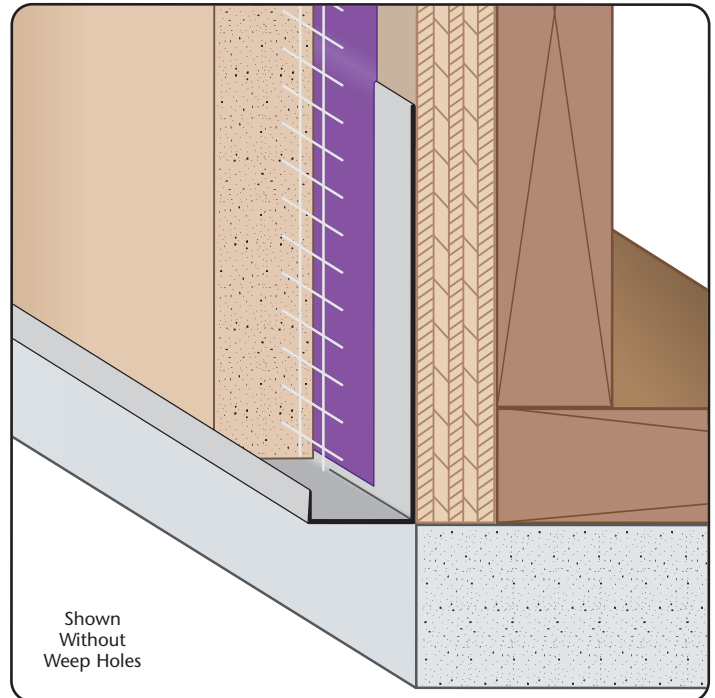
### ASTM Codes:

Details: [stpro.us/ASTM](http://stpro.us/ASTM)

All Accessories are fabricated from prime galvanized steel G90 zinc coating by the hot dipped method, conforming to steel and coating specification ASTM A-653/A-653M or zinc alloy meeting ASTM B-69. Stainless Steel A480/A480M A580M (Stainless Steel) For installation and placement instructions refer to ASTM C1063, C841 and C926.

### Most Common Part Numbers:

<b>J B078 312</b>	J-B: X=7/8, Y=3 1/2, GS, 10'
<b>J B078W312L</b>	J-B: X=7/8, 1/2 Weep Hole, Y=3 1/2, GS, 10'
<b>J B138W312L</b>	J-B: X=1 3/8, 1/2 Weep Hole, Y=3 1/2, GS, 10'
<b>J B034 312</b>	J-B: X=3/4, Y=3 1/2, GS, 10'
<b>J B138 312</b>	J-B: X=1 3/8, Y=3 1/2, GS, 10'
<b>J B118 312</b>	J-B: X=1 1/8, Y=3 1/2, GS, 10'
<b>J B034W312L</b>	J-B: X=3/4, 1/2 Weep Hole, Y=3 1/2, GS, 10'
<b>J B078 312Z</b>	J-B: X=7/8, Y=3 1/2, Z, 10'



<b>QUOTE</b>	Company: _____	QTY: _____	PO Number: _____
	Name: _____	Material/Gauge: _____	Job/Project: _____
	Address: _____	X Size: _____	Notes: _____
	City: _____	Y Size: _____	_____
	State/ZIP: _____	Length: _____	_____
	Phone: _____	Weep Holes: <input type="checkbox"/> None <input type="checkbox"/> 1/8" <input type="checkbox"/> 1/2"	_____
	eMail: _____		_____
			_____

**877-786-2587 • StocktonProducts.com**

