



CUSTOM SIZES AVAILABLE!

Stockton Custom Fabrication

877-786-2587

custom@StocktonProducts.com



PRODUCTS™

FSM: Fascia Soffit Mold

- Custom Sizes Available, Contact Customer Service For Details
- Available With 1/8", 1/4" Vent Holes or No Vent
- Available With 1/8" Weep Holes or No Weep Holes
- Available Curved Upon Request
- Available in Aluminum (A), Copper (C), Galvanized Steel (GS), Bonderized (BN), Galvalume® (GVM), Stainless Steel (SS) or Zinc (Z)

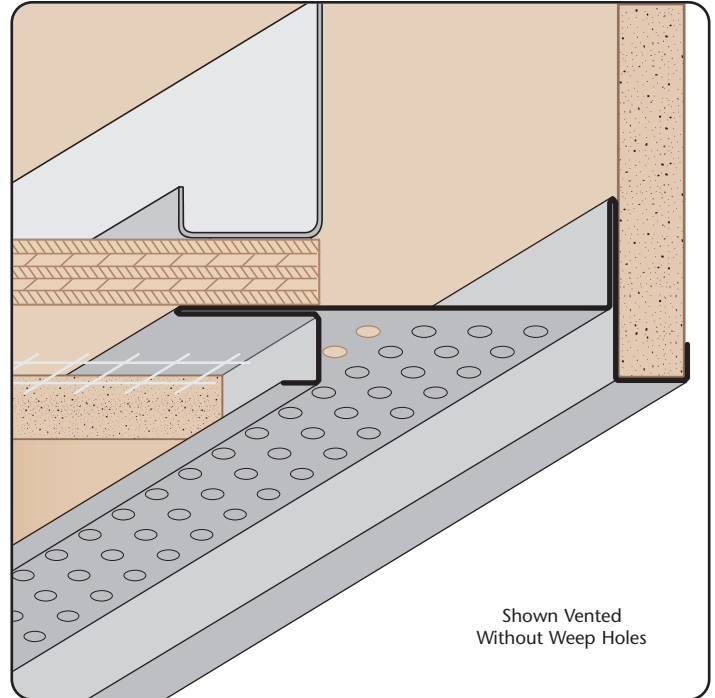
Creates a decorative reveal at fascia/soffit transition providing a small overhang drip edge. Has return keys for screeding of stucco. Extended attachment flanges provides area to overlay lathing. Can be vented for perimeter airflow into space above.

Most Common Sizes

X Sizes: 1/2", 5/8", 3/4", 7/8", 1" or 1 3/8"

Y Sizes: 3/4", 1", 1 1/2", 2", 2 1/2" or 3"

Length: 120"



Shown Vented Without Weep Holes

Materials And Finishes:

Details: stpro.us/MET

Aluminum (A), Copper (C), Galvanized Steel (GS), Bonderized (BN), Galvalume® (GVM), Stainless Steel (SS) or Zinc (Z)

ASTM Codes:

Details: stpro.us/ASTM

653-CS, A1018, A262, A36, A513, A653, A792, A924, B 370-12, B-209, B-209, B6/B69, C1047, C1063, C841, ML/SFA 920

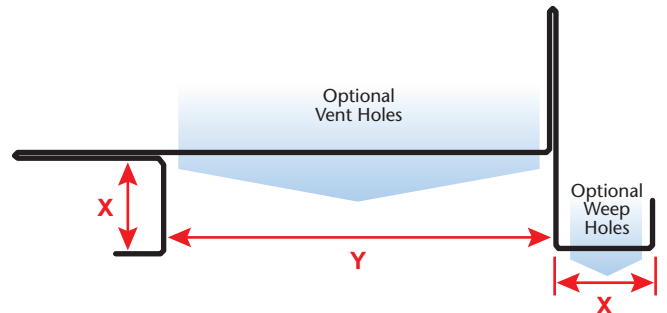
Most Common Part Numbers:

FSM034 078GA20 FSM: X=3/4, Y=7/8, 20 ga GS, 10'

FSM078 034 FSM: X=7/8, Y=3/4, GS, 10'

FSM100V200W100L FSM: X=1, 1/8 Vent, Y=2, 1/2 Weep, 1 Return, GS, 10'

FSM100V200W138L FSM: X=1, 1/8 Vent, Y=2, 1/2 Weep, 1 3/8 Return, GS, 10'



QUOTE	Company: _____	QTY: _____	PO Number: _____
	Name: _____	Material/Gauge: _____	Job/Project: _____
	Address: _____	X Size: _____	Notes: _____
	City: _____	Y Size: _____	_____
	State/ZIP: _____	Length: _____	_____
	Phone: _____	Vent Holes: <input type="checkbox"/> None <input type="checkbox"/> 1/8" <input type="checkbox"/> 1/4"	_____
	eMail: _____	Weep Holes: <input type="checkbox"/> None <input type="checkbox"/> 1/8"	_____

877-786-2587 • StocktonProducts.com

