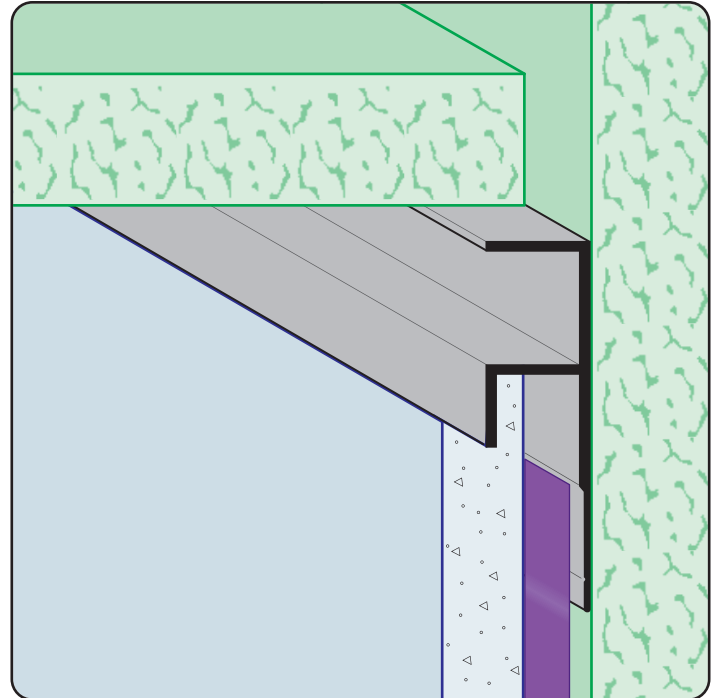


F MOLD-FCP: F Mold for Fiber Cement Panel

- Available in Aluminum Alloy (6063 T-5)
Creates a decorative reveal in a wall/soffit transition.
- Note:** Attach panel per manufacturer's recommended installation instructions.



Most Common Sizes

Length: 10'

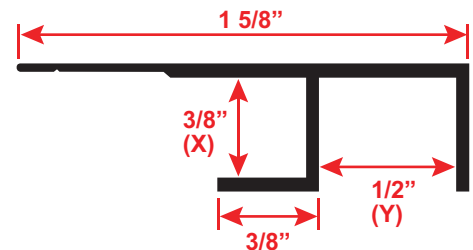


Materials And Finishes:

Details: stpro.us/EXT
Aluminum Alloy (6063 T-5)

ASTM Codes:

Details: stpro.us/ASTM
AA-M32-C10A21, AAMA 605.2, C841, C1047, C1063,
B136-84, B244-97, D4214-98, ND1730-67-TYPE B



Most Common Part Numbers:

- F MOLD FCP375 50EC** F Mold-FCP: X=3/8, Y=1/2, Clear Anodize, A, 10'
- F MOLD FCP375 50EP** F Mold-FCP: X=3/8, Y=1/2, Powder Coated, A, 10'

QUOTE	Company: _____	QTY: _____	PO Number: _____
	Name: _____	Material: Aluminum Alloy (6063 T-5)	Job/Project: _____
	Address: _____	Length: _____	Notes: _____
	City: _____		_____
	State/ZIP: _____		_____
	Phone: _____		_____
	eMail: _____		_____

877-786-2587 • StocktonProducts.com

