



CUSTOM SIZES AVAILABLE!

Stockton Custom Fabrication

877-786-2587

custom@StocktonProducts.com



PRODUCTS™

FDM: F-Drip Mold

- Custom Sizes Available, Contact Customer Service For Details
- Available With 1/8" Weep Holes or No Holes
- Available in Aluminum (A), Copper (C), Galvanized Steel (GS), Bonderized (BN), Galvalume® (GVM), Stainless Steel (SS) or Zinc (Z)

Provides a plaster stop/drip molding with an aesthetic reveal for window heads, top of doors frames and plate conditions where a drip function in desired.

Most Common Sizes

X Sizes: 1/2", 3/4", 7/8", 1" or 1 3/8"

Y Sizes: 1/2", 3/4" or 1"

Length: 120"

Materials And Finishes:

Details: stpro.us/MET

Aluminum (A), Copper (C), Galvanized Steel (GS), Bonderized (BN), Galvalume® (GVM), Stainless Steel (SS) or Zinc (Z)

ASTM Codes:

Details: stpro.us/ASTM

All Accessories are fabricated from prime galvanized steel G90 zinc coating by the hot dipped method, conforming to steel and coating specification ASTM A-653/A-653M or zinc alloy meeting ASTM B-69. Stainless Steel A480/A480M A580M (Stainless Steel) For installation and placement instructions refer to ASTM C1063, C841 and C926.

Most Common Part Numbers:

FDM078 012 100 FDM: X=7/8, Y=1/2, GS, 10'

FDM078W012 FDM: X=7/8, 1/8 Weep, Y=1/2, GS, 10'

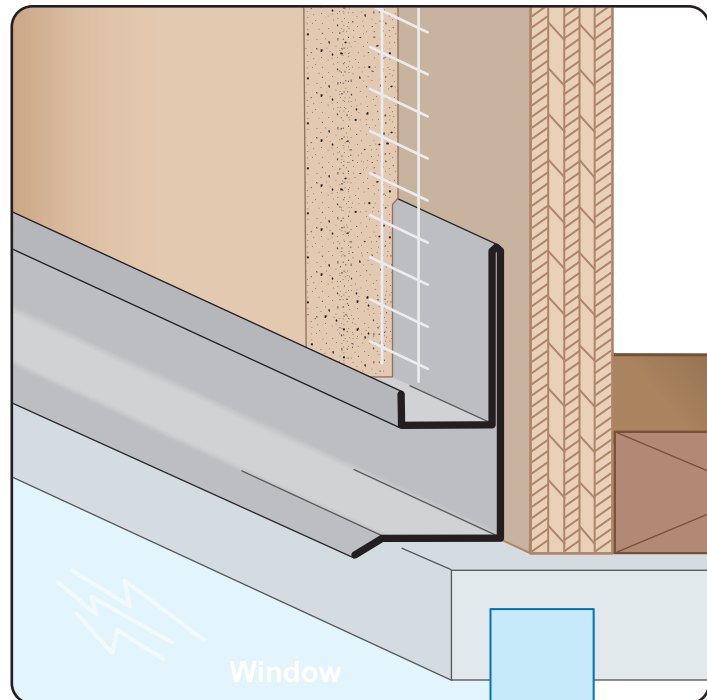
FDM078W100 FDM: X=7/8, 1/8 Weep Hole, Y=1, A, 10'

FDM078W100A FDM: X=7/8, 1/8 Weep Hole, Y=1, A, 10'

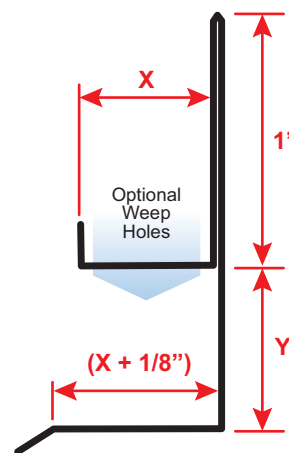
FDM118W034A FDM: X=1 1/8, 1/8 Weep, Y=3/4, A, 10'

FDM1516W014 FDM: X=1 5/16, 1/8 Weep, Y=1/4, GS, 10'

FDM50 100EC FDM: X=1/2, Y=1, Clear Anodize, 10'



Window



QUOTE

Company: _____
 Name: _____
 Address: _____
 City: _____
 State/ZIP: _____
 Phone: _____
 eMail: _____

QTY: _____
 Material/Gauge: _____
 X Size: _____
 Y Size: _____
 Length: _____
 Weep Holes: None 1/8"

PO Number: _____
 Job/Project: _____
 Notes: _____

877-786-2587 • StocktonProducts.com

