

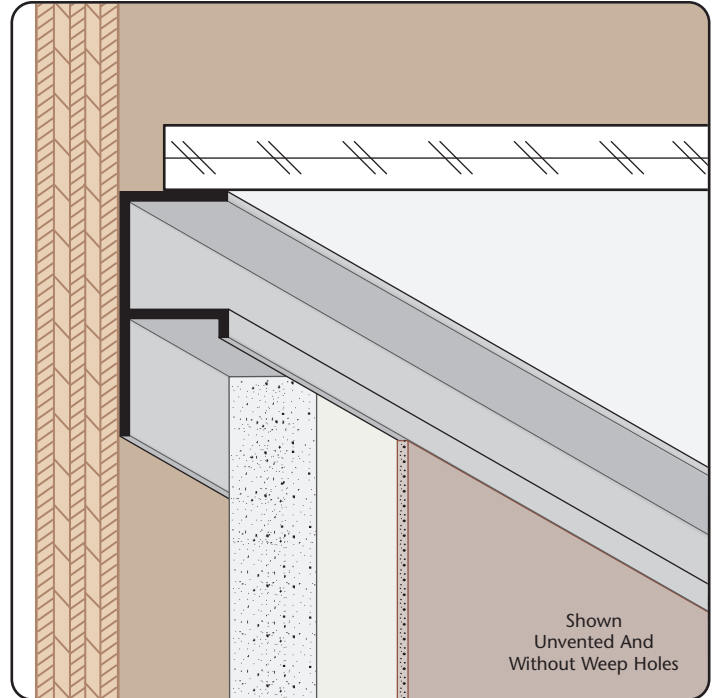
# FDM: F Drywall Molding

- Available With 1/8" x 1" Vent Slots or No Vents
- Available With 1/8" Weep Holes or No Weep Holes
- Available Curved Upon Request
- Available in Aluminum Alloy (6063 T-5)

A drywall stop/control screed for drywall, used at the top or base of columns, the top of walls at the ceiling, or at the base to create a reveal. Also used at the top of windows to permit the continuation of a horizontal reveal at the window line.

**Note:** \*Not available with a 1 1/2" Y size.

**Note:** \*\*Available on 1/2" reveal.



Shown Unvented And Without Weep Holes

### Most Common Sizes

**X Sizes:** 1/2" or \*5/8"

**Y Sizes:** \*\*1/2", 3/4", 1", 1 1/2", 2", 3" or 4"

**Length:** 10'

### Materials And Finishes:

Details: [stpro.us/EXT](http://stpro.us/EXT)

Aluminum Alloy (6063 T-5)

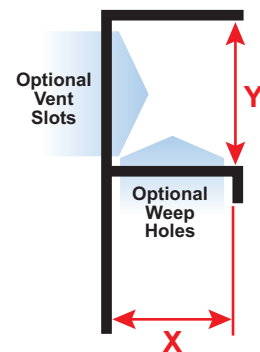
### ASTM Codes:

Details: [stpro.us/ASTM](http://stpro.us/ASTM)

AA-M32-C10A21, AAMA 605.2, C841, C1047, C1063, B136-84, B244-97, D4214-98, ND1730-67-TYPE B

### Most Common Part Numbers:

<b>FDM50 100EC</b>	FDM: X=1/2, Y=1, Clear Anodize, A, 10'
<b>FDM50 50EC</b>	FDM: X=1/2, Y=1/2, Clear Anodize, A, 10'
<b>FDM50 75EC</b>	FDM: X=1/2, Y=3/4, Clear Anodize, A, 10'
<b>FDM50V150EC</b>	FDM: X=1/2, Vent, Y=1 1/2, Clear Anod, A, 10'
<b>FDM625 100EC</b>	FDM: X=5/8, Y=1, Clear Anodize, A, 10'
<b>FDM625 200EC</b>	FDM: X=5/8, Y=2, Clear Anodize, A, 10'
<b>FDM625 50EC</b>	FDM: X=5/8, Y=1/2, Clear Anodize, A, 10'
<b>FDM625 75EC</b>	FDM: X=5/8, Y=3/4, Clear Anodize, A, 10'



<b>QUOTE</b>	Company: _____	QTY: _____	PO Number: _____
	Name: _____	Material: Aluminum Alloy (6063 T-5)	Job/Project: _____
	Address: _____	X Size: _____	Notes: _____
	City: _____	Y Size: _____	_____
	State/ZIP: _____	Length: _____	_____
	Phone: _____	Vent Slots: <input type="checkbox"/> None <input type="checkbox"/> 1/8" x 1"	_____
	eMail: _____	Weep Holes: <input type="checkbox"/> None <input type="checkbox"/> 1/8"	_____

**877-786-2587 • StocktonProducts.com**

