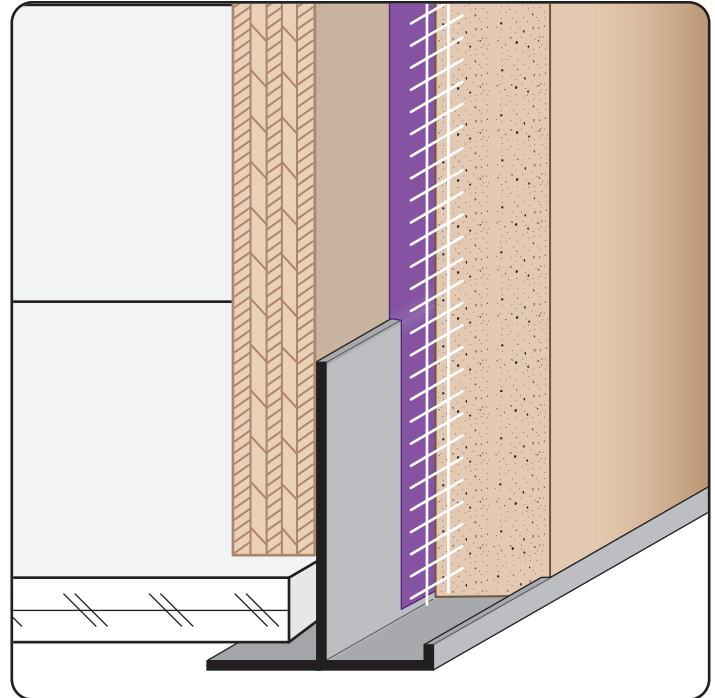


# FCM: Fascia Corner Molding

- Available Curved Upon Request
  - Available in Aluminum Alloy (6063 T-5)
- A plaster stop for fascia/soffit corner conditions that provides a reveal on the soffit portion.



## Most Common Sizes

Length: 10'

### Materials And Finishes:

Details: [stpro.us/EXT](http://stpro.us/EXT)

Aluminum Alloy (6063 T-5)

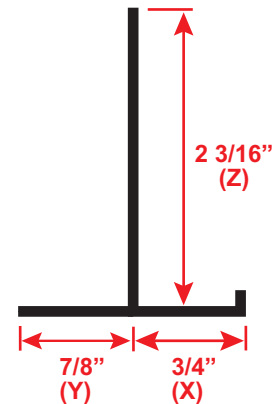
### ASTM Codes:

Details: [stpro.us/ASTM](http://stpro.us/ASTM)

AA-M32-C10A21, AAMA 605.2, C841, C1047, C1063, B136-84, B244-97, D4214-98, ND1730-67-TYPE B

### Most Common Part Numbers:

- FCM75EC** FCM: X=3/4, Y=7/8, Z=2 3/16, Clear Anod, A, 10'
- FCM75EDB** FCM: X=3/4, Y=7/8, Z=2 3/16, Clear Anod, A, 10'
- FCM75E** FCM: X=3/4, Y=7/8, Z=2 3/16, Mill Finish, A, 10'
- FCM75ECH** FCM: X=3/4, Y=7/8, Z=2 3/16, Chem-Film, A, 10'
- FCM75EK** FCM: X=3/4, Y=7/8, Z=2 3/16, Fluorophore Paint, A, 10'



<b>QUOTE</b>	Company: _____	QTY: _____	PO Number: _____
	Name: _____	Material: Aluminum Alloy (6063 T-5)	Job/Project: _____
	Address: _____	Length: _____	Notes: _____
	City: _____		_____
	State/ZIP: _____		_____
	Phone: _____		_____
	eMail: _____		_____

877-786-2587 • [StocktonProducts.com](http://StocktonProducts.com)

