



**CUSTOM SIZES AVAILABLE!**

Stockton Custom Fabrication

877-786-2587

custom@StocktonProducts.com



**PRODUCTS™**

# EWR: Expansion Water-Resistant Reveal - 2 Piece

- Custom Sizes Available, Contact Customer Service For Details
- SUPERIOR® Moisture Protection
- Available With 1/8" Weep Holes or No Holes
- Available in Aluminum (A), Copper (C), Galvanized Steel (GS), Bonderized (BN), Galvalume® (GVM), Stainless Steel (SS) or Zinc (Z)

The dual function self-aligning expansion joint provides movement capability at floor line while allow moisture to release from the top ground and locks out moisture from the bottom. Special "Step" on the attachment leg provides a locator for correct placement of the fasteners and helps keep the molding laying flat on the wall.

### Most Common Sizes

**X Sizes:** 1/2", 3/4", 1" or 1 3/8"

**Y Sizes:** 3/4", 1", 1 1/2", 2" or 3"

**Z Sizes:** 2 1/2"

**Length:** 120"

### Materials And Finishes:

Details: [stpro.us/MET](http://stpro.us/MET)

Aluminum (A), Copper (C), Galvanized Steel (GS), Bonderized (BN), Galvalume® (GVM), Stainless Steel (SS) or Zinc (Z)

### ASTM Codes:

Details: [stpro.us/ASTM](http://stpro.us/ASTM)

All Accessories are fabricated from prime galvanized steel G90 zinc coating by the hot dipped method, conforming to steel and coating specification ASTM A-653/A-653M or zinc alloy meeting ASTM B-69. Stainless Steel A480/A480M A580M (Stainless Steel) For installation and placement instructions refer to ASTM C1063, C841 and C926.

### Most Common Part Numbers:

**EWR012W034 212JZ** EWR: X=1/2, Y=3/4, 1/4 Weep, 2 1/2, Z, 10'

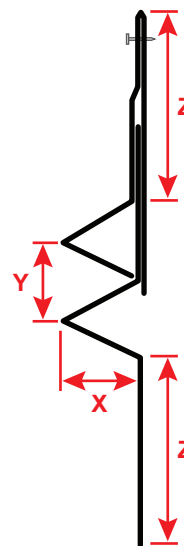
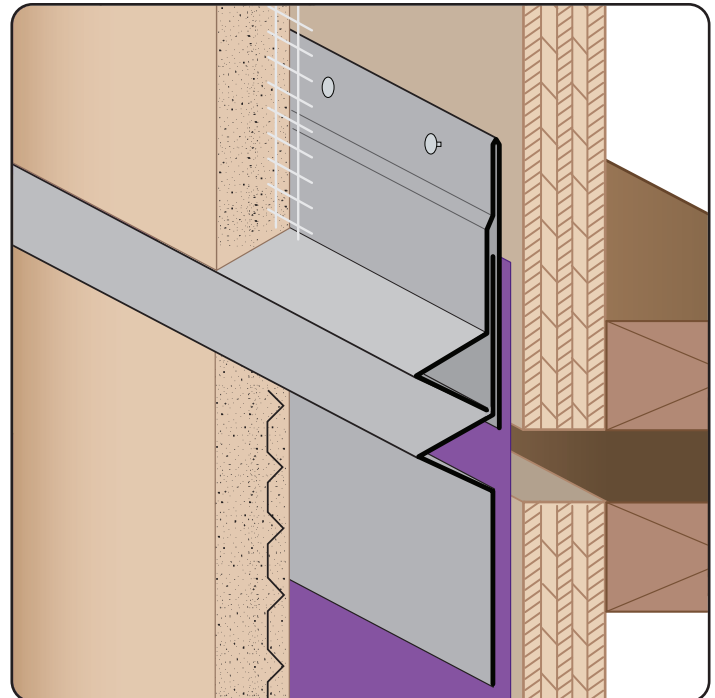
**EWR034 012 300** EWR: X=3/4, Y=1/2, Z=3, GS, 10'

**EWR034 034FL300** EWR: X=3/4, Y=3/4, Z=3, GS, 10'

**EWR034 100 212** EWR: X=3/4, Y=1, Z=2 1/2, GS, 10'

**EWR034W200 300** EWR: X=3/4, 1/8 Weep, Y=2, Z=3, GS, 10'

**EWR078 100 300** EWR: X=7/8, Y=1, Z=3, GS, 10'



<b>QUOTE</b>	Company: _____	QTY: _____	PO Number: _____
	Name: _____	Material/Gauge: _____	Job/Project: _____
	Address: _____	X Size: _____	Notes: _____
	City: _____	Y Size: _____	_____
	State/ZIP: _____	Z Size: _____	_____
	Phone: _____	Length: _____	_____
	eMail: _____	Weep Holes: <input type="checkbox"/> None <input type="checkbox"/> 1/8"	_____

**877-786-2587 • StocktonProducts.com**

