



**CUSTOM SIZES AVAILABLE!**

Stockton Custom Fabrication

877-786-2587

custom@StocktonProducts.com



**PRODUCTS™**

# DWT: Drywall Wall Trim

- Custom Sizes Available, Contact Customer Service For Details
- Available With 1/8", 1/4" Vent Holes or No Vent
- Available in Aluminum (A), Copper (C), Galvanized Steel (GS), Bonderized (BN), Galvalume® (GVM), Stainless Steel (SS) or Zinc (Z)

A multi-functional drywall product that makes a smooth transition from a drywall ceiling to the wall. Includes key holes for drywall mud adhesion.

### Most Common Sizes

**X Sizes:** 1/2" or 5/8"

**Y Sizes:** 1/2", 3/4", 1", 1 1/2", 2", 2 1/2", 3", 3 1/2", 4" or 4 1/2"

**Length:** 120"

### Materials And Finishes:

Details: [stpro.us/MET](http://stpro.us/MET)

Copper (C), Galvanized Steel (GS), Bonderized (BN), Galvalume® (GVM), Stainless Steel (SS) or Zinc (Z)

### ASTM Codes:

Details: [stpro.us/ASTM](http://stpro.us/ASTM)

653-CS, A1018, A262, A36, A513, A653, A792, A924, B 370-12, B-209, B-209, B6/B69, C1047, C1063, C841, ML/SFA 920

### Most Common Part Numbers:

**DWT012 012C** DWT: X=1/2, Y=1/2, C, 10'

**DWT012V012SS** DWT: X=1/2, 1/8 Vent, Y=1/2, SS, 10'

**DWT058 200Z** DWT: X=5/8, Y=2, Z, 10'

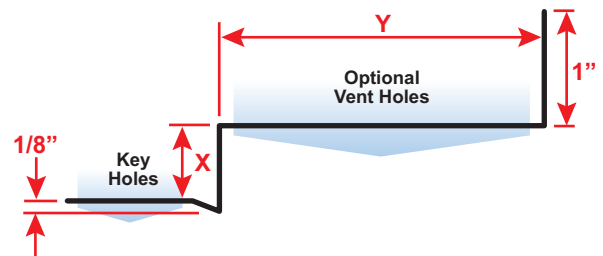
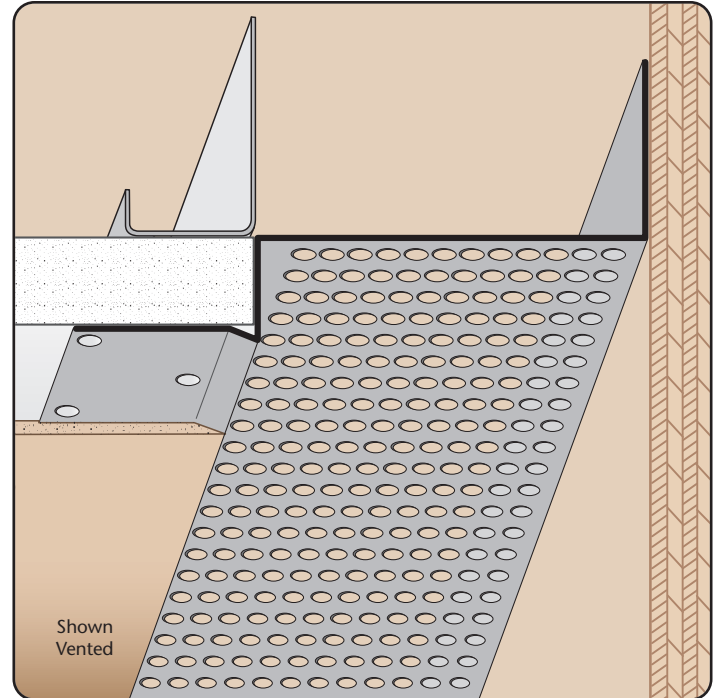
**DWT058V112A** DWT: X=5/8, 1/8 Vent, Y=1 1/2, A, 10'

**DWT058V200SS** DWT: X=5/8, 1/8 Vent, Y=2, SS, 10'

**DWT058V212** DWT: X=5/8, 1/8 Vent, Y=2 1/2, GS, 10'

**DWT058V300JA** DWT: X=5/8, 1/4 Vent, Y=3, A, 10'

**DWT058V400JA** DWT: X=5/8, 1/4 Vent, Y=4, A, 10'



**QUOTE**

Company: \_\_\_\_\_  
 Name: \_\_\_\_\_  
 Address: \_\_\_\_\_  
 City: \_\_\_\_\_  
 State/ZIP: \_\_\_\_\_  
 Phone: \_\_\_\_\_  
 eMail: \_\_\_\_\_

QTY: \_\_\_\_\_  
 Material/Gauge: \_\_\_\_\_  
 X Size: \_\_\_\_\_  
 Y Size: \_\_\_\_\_  
 Length: \_\_\_\_\_  
 Vent Holes:  None  1/8"  1/4"

PO Number: \_\_\_\_\_  
 Job/Project: \_\_\_\_\_  
 Notes: \_\_\_\_\_  
 \_\_\_\_\_  
 \_\_\_\_\_

**877-786-2587 • StocktonProducts.com**

