



CUSTOM SIZES AVAILABLE!

Stockton Custom Fabrication

877-786-2587

custom@StocktonProducts.com



PRODUCTS™

CPB: Casing Plaster Bead

- Custom Sizes Available, Contact Customer Service For Details
- SUPERIOR® Moisture Protection
- Available Curved Upon Request
- Available in Aluminum (A), Copper (C), Galvanized Steel (GS), Bonderized (BN), Galvalume® (GVM), Stainless Steel (SS) or Zinc (Z)

A plaster stop/casing bead used to terminate the stucco at the base of walls and/or where a plaster stop is required. Has a 60° angle which creates a unique look.

Most Common Sizes

X Sizes: 1/2", 3/4", 7/8", 1" or 1 3/8"

Y Sizes: 1 1/2", 2 1/2" or 3 1/2"

Length: 120"

Materials And Finishes:

Details: stpro.us/MET

Aluminum (A), Copper (C), Galvanized Steel (GS), Bonderized (BN), Galvalume® (GVM), Stainless Steel (SS) or Zinc (Z)

ASTM Codes:

Details: stpro.us/ASTM

All Accessories are fabricated from prime galvanized steel G90 zinc coating by the hot dipped method, conforming to steel and coating specification ASTM A-653/A-653M or zinc alloy meeting ASTM B-69. Stainless Steel A480/A480M A580M (Stainless Steel) For installation and placement instructions refer to ASTM C1063, C841 and C926.

Most Common Part Numbers:

CPB034 112 CPB: X=3/4, Y=1 1/2, GS, 10'

CPB034 212 CPB: X=3/4, Y=2 1/2, GS, 10'

CPB034 212SS CPB: X=3/4, Y=2 1/2, SS, 10'

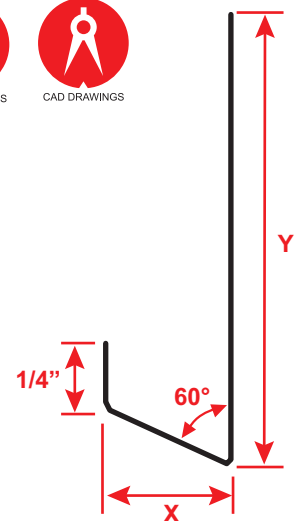
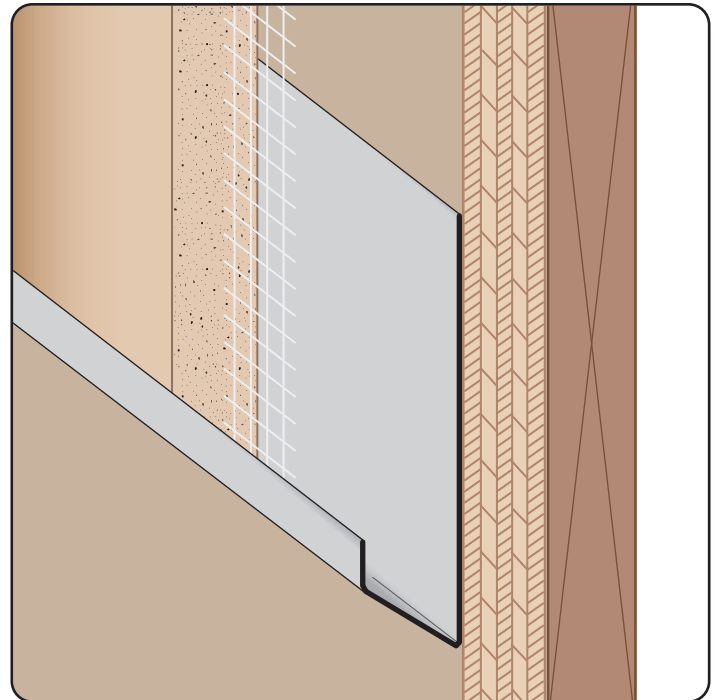
CPB078 112 CPB: X=7/8, Y=1 1/2, GS, 10'

CPB078 112Z CPB: X=7/8, Y=1 1/2, Z, 10'

CPB078 312 CPB: X=7/8, Y=3 1/2, GS, 10'

CPB078 312SS CPB: X=7/8, Y=3 1/2, SS, 10'

CPB138 212 CPB: X=1 3/8, Y=2 1/2, GS, 10'



QUOTE

Company: _____
 Name: _____
 Address: _____
 City: _____
 State/ZIP: _____
 Phone: _____
 eMail: _____

QTY: _____
 Material/Gauge: _____
 X Size: _____
 Y Size: _____
 Length: _____

PO Number: _____
 Job/Project: _____
 Notes: _____

877-786-2587 • StocktonProducts.com

