



CUSTOM SIZES AVAILABLE!

Stockton Custom Fabrication

877-786-2587

custom@StocktonProducts.com



PRODUCTS™

AWF: Attic Wing Fascia (J-2)

- Custom Sizes Available, Contact Customer Service For Details
- Available With 1/8", 1/4" Vent Holes or No Vent
- Available Curved Upon Request
- Available in Aluminum (A), Copper (C), Galvanized Steel (GS), Bonderized (BN), Galvalume® (GVM), Stainless Steel (SS) or Zinc (Z)

Provides a ventilated finish at the juncture of soffit and fascia providing attachment by a wing in attic. Available non-vented for use as a decorative reveal upon request.

Most Common Sizes

X Sizes: 3/8", 1/2", 5/8", 3/4", 7/8" or 1"

Y Sizes: 3/4", 1", 1 1/2", 2", 2 1/2", 3", 3 1/2", 4", 4 1/2" or 5",

Length: 120"

Materials And Finishes:

Details: stpro.us/MET

Aluminum (A), Copper (C), Galvanized Steel (GS), Bonderized (BN), Galvalume® (GVM), Stainless Steel (SS) or Zinc (Z)

ASTM Codes:

Details: stpro.us/ASTM

653-CS, A1018, A262, A36, A513, A653, A792, A924, B 370-12, B-209, B-209, B6/B69, C1047, C1063, C841, ML/SFA 920

Most Common Part Numbers:

AWF012V400 AWF: X=1/2, 1/8 Vent, Y=4, GS, 10'

AWF034V112J AWF: X=3/4, 1/4 Vent, Y=1 1/2, GS, 10'

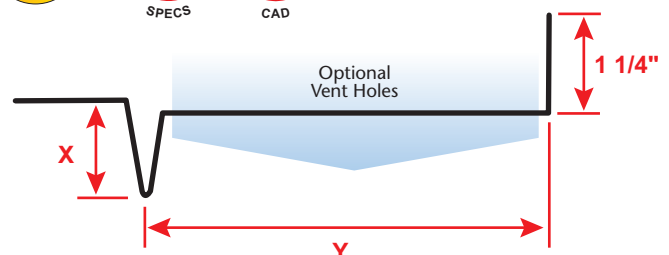
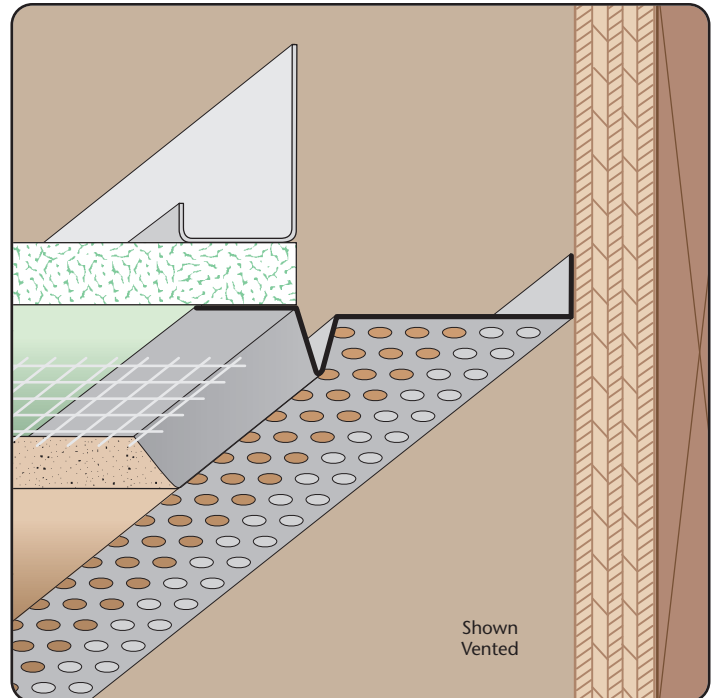
AWF034V134RT12 AWF: X=3/4, 1/4 Vent, Y=1 3/4, GS, 10', 1/2 Return

AWF034V212 AWF: X=3/4, 1/8 Vent, Y=2 1/2, GS, 10'

AWF034V412 AWF: X=3/8, 1/8 Vent, Y=4 1/2, GS, 10'

AWF038V034 AWF: X=3/8, 1/8 Vent, Y=3/4, GS, 10'

AWF078V400 AWF: X=7/8, 1/8 Vent, Y=4, GS, 10'



QUOTE

Company: _____
 Name: _____
 Address: _____
 City: _____
 State/ZIP: _____
 Phone: _____
 eMail: _____

QTY: _____
 Material/Gauge: _____
 X Size: _____
 Y Size: _____
 Length: _____
 Vent Holes: None 1/8" 1/4"

PO Number: _____
 Job/Project: _____
 Notes: _____

877-786-2587 • StocktonProducts.com

